

# FIT FastLoc 65 and 80 Series User's Installation Guide

## Low Profile, In-Ceiling, Coaxial, Infinite Baffle Loudspeaker with FastLoc Grille

The easy to install FIT-FL series is a two-way ceiling loudspeaker incorporating new technology woofers with butyl rubber surrounds and high grade pivoting tweeters. It features the revolutionary Focused Image Technology. This feature gives the user the unique Patented Three Dimensional Positioning (3DP) of the woofer. The 3DP concept allows the user to separately adjust the angle, tilt and rotation of the woofer so you can direct the sound where you want it not just where you installed it. The Positive Positioning Lock (PPL) device prevents baffle movement and speaker vibrations. Two screws on either side of the woofer pull the back plane tight and lock the position in place.

It also features the revolutionary FastLoc zero edge quick connect grille. Architects and designers have resisted the size of the traditional bezel. The FastLoc feature, found only at Current Audio, exhibits the smallest exposed bezel that virtually disappears into the ceiling. But the major feature is the Patent Pending design that allows for rapid install that conforms to uneven surfaces and prevents the grill from falling off even in earthquakes. The positive positioning locking device PPL prevents baffle movement and speaker vibrations.

The speaker grille color is white, and is a close match to Frazee White Shadow 181. It can be painted to match any décor. The speaker enclosure is a durable UV-resistant material that allows for both indoor and outdoor installations. Unlike other grilles that use magnets to hold them on they must be made of steel that will rust. The perforated powder-coated aluminum alloy grill is long-lasting, corrosion resistant and rust-free.

Four built-in expanding transverse dog leg clamps permit installation with or without pre-wire construction brackets in drywall or material with thickness of 7/32" to 1 3/16".

Electrical connection, up to 12 gauge wire, is made by two gold plated constant tension spring-loaded terminals.

With our limited Lifetime warranty you are assured years of superior trouble free operation.



SPECIFICATIONS for 65 Series	FIT650FL	FIT651FL	FIT652FL	FIT654FL
Driver	MetaPlex Composite	Injection Molded Carbon Fiber	Aluminum	Woven Carbon Fiber
Tweeter, 1", Diffraction-less, Dome	Silk Ferrofluid Cooled	Aluminum Ferrofluid Cooled	Aluminum Ferrofluid Cooled	Ceramic Coated Aluminum Ferrofluid Cooled
Frequency Response	42Hz-20kHz	40Hz-20kHz	38Hz-20kHz	35Hz-21kHz
Power handling	5-100 Watts	5-125 Watts	5-125 Watts	5-150Watts
SPL @ 1 Watt/1 meter	90db	90db	91db	91.5db
Impedance 8 ohm Nominal	Fixed Crossovers	3 Position Crossovers	3 Position Crossovers	3 Position Crossovers
Diameter x Depth 10 7/8"(27.6cm)x 5 5/8"(14.4cm)				
Retro-fit Cutout Diameter 8 3/8" (21.4cm)				

Part Number	92062 FIT650FL; 92008 FIT651FL; 92007 FIT652FL; 92006 FIT654FL 92002 FIT801FL; 92001 FIT802FL; 92000 FIT804FL
Manual URL	www.currentaudio.com
Accessories Bracket	NC6CB or NCFIT8CB New Construction Volume Control ZL25R, ZL50S



www.currentaudio.com  
©2009 Current Audio LLC  
1830 John Towers Avenue El Cajon, CA 92020 Sales 866-927-7181  
RPA 12/09

# FastLoc User's Installation Guide

SPECIFICATIONS for 80 Series	FIT801FL	FIT802FL	FIT804FL
Driver	Injection Molder Carbon Fiber	Aluminum	Woven Carbon Fiber
Tweeter, 1", Diffraction-less, Dome	Aluminum Ferrofluid Cooled	Aluminum Ferrofluid Cooled	Ceramic Coated Aluminum Ferrofluid Cooled
Frequency Response	35Hz-20kHz	38Hz-20kHz	35Hz-20kHz
Power handling	5-150 Watts	5-150 Watts	5-150Watts
SPL @ 1 Watt/1 meter	90db	91db	91.5db
Impedance 8 ohm Nominal	3 Position Crossovers	3 Position Crossover s	3 Position Crossover s
Overall Diameter x Depth 12.312"(31.3cm)x 6.9"(17.5cm)			
Retro-fit Cutout Diameter 10.437" (26.5cm)			

## Packaging and Enclosed Parts

Please inspect your pack for damaged or missing parts. Notify your supplier if any discrepancies occur.

There are only two (2) parts in the package: One main speaker housing and one FastLoc grille.

Only simple hand tools are required for assembly and installation.

Required tools: #2 Phillips screwdriver only, if you have new construction brackets previously installed.

Drywall Hand saw if no New Construction Brackets were installed. A saber saw may be required if you are cutting into plywood.

## Painting the Speaker Grille

If grille requires painting, carefully remove the white scrim cloth on the inside of the FastLoc Grille and save for reinstallation. This cloth is provided for aesthetic purpose only. Either spray paint the grille or use a stiff stipple paint brush. Do Not clog the perforated holes as this will impede the acoustics of the speaker.

### 1

Using the supplied Trace Template, place the cutout template against the ceiling and trace along the inside circle. It is suggested to cut a small pilot hole to verify no obstructions, such as pipes or beams, that could hinder the install.

Carefully cut out the ceiling material along the circle. A drywall saw is perfect for this step. Hold a box or trash can under your cutting to catch the debris.

**NOTE:** A stud finder may be helpful to locate the ceiling beams. You want to layout the hole to the side of any beams.



Trace Template

### 2

After you have cut your desired hole from the template, locate the speaker wire for that speaker.

Pull enough wire slack down to attach the 2 conductor wire to the gold plated constant tension spring-loaded terminals.

Remove about 2" of the outer jacket then strip about 1/2" insulation from each wire and slightly twist the strands to ensure all strands can be inserted into the hole. Refer to next picture for location of the gold plated constant tension spring-loaded terminals.

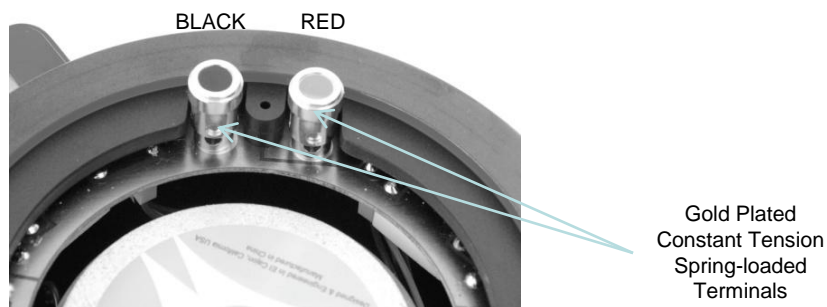
Push down on the RED (+) colored Terminal and insert the Red or copper colored conductor all the way up to the insulation into the hole at the bottom of the terminal. Now release your finger from the terminal. Next do the same to the Black or silver colored conductor and insert into the BLACK (-) colored Terminal. Make sure there are NO whiskers from the strands that could cause a short. The other end of these wires will be connected to your amplifier or volume control.

**Note:** Sometimes your wire color may be White (+) and Green (-).

You now have a connection with the proper tension for continued operation that will not wiggle out or cause poor connection.

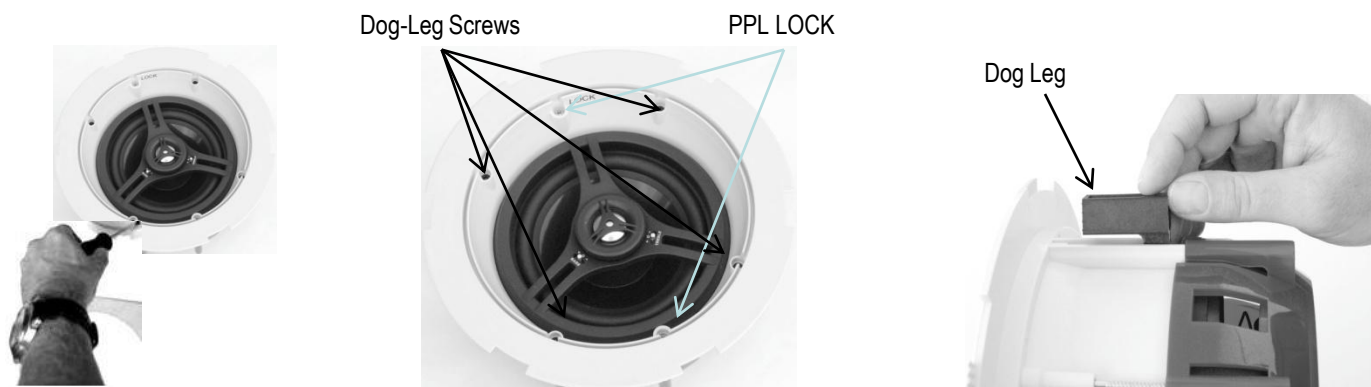
Specifications subject to change without notice.

# FastLoc User's Installation Guide



## 3

With the grille removed, loosen the four (4) Black Dog-Leg screws and the two (2) Silver PPL (Positive Position Lock) LOCK screws a ½ turn counterclockwise with a #2 Phillips screwdriver.



## 4

Grab and hold the speaker by the built-in handle as shown. Do Not put fingers into the tweeter in the center of the speaker.

**WARNING! Denting or deforming the tweeter dome will change the acoustics of the speaker.**

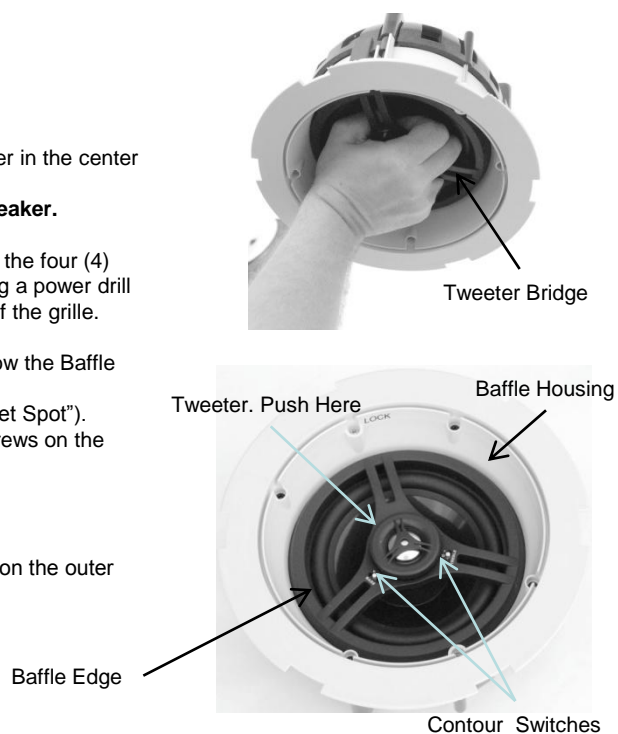
Insert the connected speaker into the ceiling hole and with a #2 Phillips screwdriver tighten the four (4) black Dog-leg screws (clockwise) until the Dog-legs clamp the speaker to the ceiling. If using a power drill or electric screw gun use the lowest torque setting. Over tightening may cause improper fit of the grille.

Next, while holding the built-in handle rotate the Tweeter Bridge to the desired degree to allow the Baffle Housing to be angled (tilted) up or down.

Now push one side of the Baffle edge to point the speaker to the desired listening area ("Sweet Spot"). Then with a #2 Phillips screwdriver tighten the two (2) Silver PPL Positive Position Lock screws on the Baffle Housing.

**WARNING! Do Not Over tighten.** This prevents future speaker movement and vibrations.

Lastly adjust the Tweeter position to your ear area at the "Sweet Spot" by slightly pushing on the outer edge of the tweeter with your thumb.



# FastLoc User's Installation Guide

---

## 5

### Make the crossover Contour Switch adjustments before installing the FastLoc grille.

The Bass and Treble switches on the Tweeter Bridge (as shown in section 4) allows for contour adjustment. Moving the switch to (+) increases the Bass or Treble 3db and to (-) reduces it by 3db. In the (O) setting you achieve a flat frequency response.

Step 1: Align the FastLoc Grille Tabs with the speaker Detents.

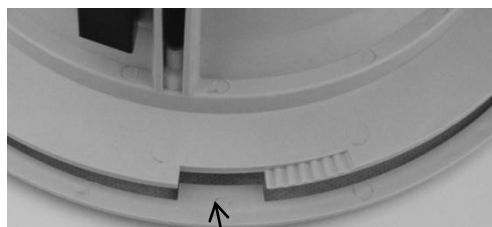
Step 2: Twist clockwise with the palm of your hand until the Grille Tabs lock with the Speaker Detents

Step 3: Rotate clockwise far enough to compensate for bumpy or uneven ceiling surfaces.

**NOTE:** Grille must be rotated enough to ensure it is locked in place to prevent the grille from loosening during earthquakes or vibrations.



Speaker Detents



Grille Tab



Step 1, Align Tabs



Step 2, Twist CW



Step 3, Rotate and Lock

---

### Limited Lifetime Warranty

Current Audio speakers are warranted to be free from defects in materials and or workmanship to the original retail purchaser provided the speaker was purchased and installed from a Current Audio Authorized Dealer.

In the event of defective materials and or workmanship, Current Audio ,LLC will, without charge, repair or replace, at its option, the defective product. In order to make claim under this Warranty and to obtain performance of any obligation under warranty, please contact Current Audio LLC. Instructions will be given on how to return the defective product to Current Audio. Returned products must be shipped prepaid. Proof of purchase must be provided with the product.

The Warranty does not apply to damage not resulting from defective materials and or workmanship while in the possession of the original consumer or due to unreasonable use by the original consumer, which includes but not limited to improper installation, negligence, unauthorized repair or modification, aesthetic deterioration from the environment. Products purchased by unauthorized sources will void the warranty and not be honored.

Current Audio ,LLC is not liable for any incidental or consequential damages, so the above limitations or inclusion may not apply to you. This warranty gives you specific legal rights, and you may have other rights, which vary from state to state within the United States.